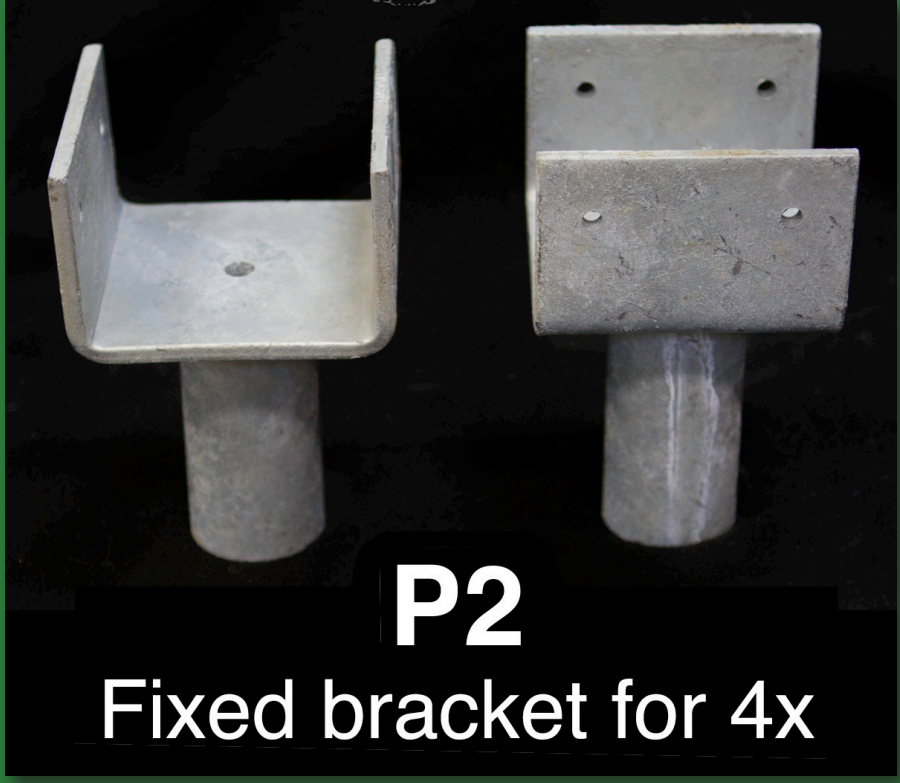


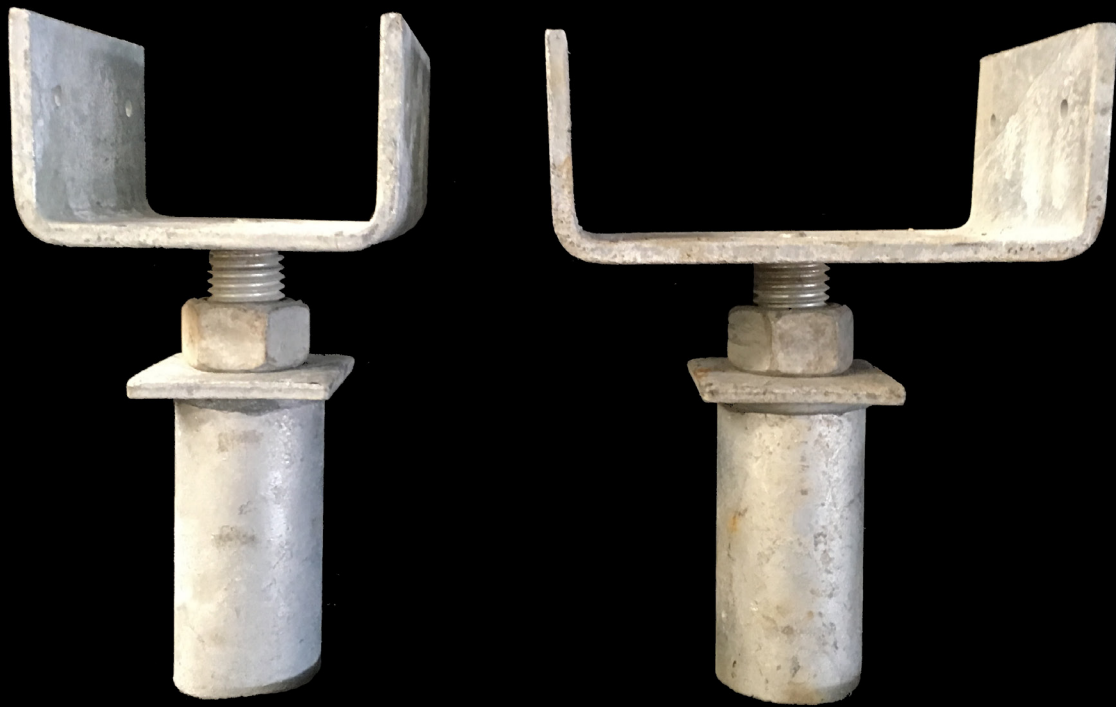
Brackets for P2 Helical Piles



width: 3 3/4"
height: 2 3/8"
bearing surface: 4"



width: 5 3/4"
height: 2 3/8"
bearing surface: 4"



P2 Adjustable Brackets

4x

width: $3 \frac{3}{4}$ "
height: $2 \frac{3}{8}$ "
bearing surface: 4"

6x

width: $5 \frac{3}{4}$ "
height: $2 \frac{3}{8}$ "
bearing surface: 4"