

Underpinning Procedure

Techno Metal Post Alaska ... PO BOX 856 Homer AK 99603 ... 907-299-3334 ... info@tmpalaska.com ... www.tmpalaska.com

Completed by General Contractor or Home Owner



Step 1: Excavate a 4 ft. wide trench around the entire structure. Do not exceed 4 ft in width. Excavated material needs to be at least 8ft away from the trench, to allow access for the installation machine.



Step 2: Cut a 6" section out of the existing concrete footing (this may be wider if using a different bracket). Chip/clean the face of the stem wall to create an even plane on the stem wall to bottom of footing.

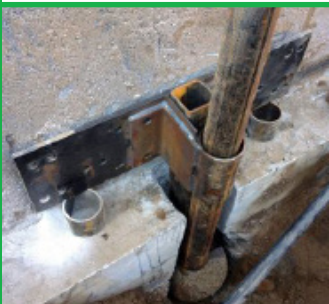


Step 3: Clear 8" of ground below the footing. Ensure the bottom of the footing is flat and smooth to allow full contact with the bracket.



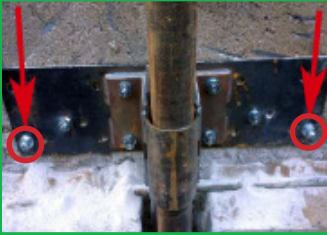
Step 4: Insert the footing bracket under the foundation wall;

Step 5: Place two couplings on top of the footing in order to support the wall bracket and create a minimum distance of 3-4".



Step 6: Place the pier in front of the footing bracket and insert the wall bracket in the footing bracket coupling and in the Techno Metal Post. Be sure to maintain a minimum distance of 3-4" by placing the wall bracket on two couplings and against the wall.

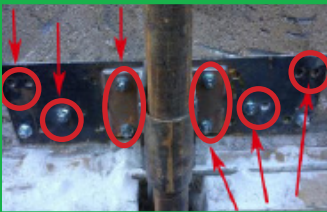
Completed by Techno Metal Post AK



Step 7: Using two concrete anchors, 3/4" x 8" long, set the wall bracket on the concrete foundation wall, making sure to install it level.



Step 8: Install the Techno Metal Post in the ground until refusal or until torque values required by an engineer are reached.



Step 9: Install all the other concrete anchors, 3/4" x 8" long; five (5) on each side of the bracket.



Step 10: Install the jack support system and put the system under pressure. Subsequently, weld the footing bracket on each side of the wall bracket (see arrows for the location of welds).



Step 11: Execute the load test as required.



Step 12: Stabilize or lift the structure as directed by (and in the presence of) the engineer, general contractor or homeowner.

Step 13: Perform welds (see arrows for the location of welds).

Step 14: Any required city inspections or verifications are the responsibility of the home owner and/or general contractor and should be completed prior to any backfilling. TMP Alaska will provide an installation report upon completion of our work. This can be expected within one or two days of work completion.

Step 15: All backfill, insulation, grading and/or landscape repair is the responsibility of the home owner and/or general contractor.